

MONTHLY MEMBERSHIP PROGRESS REPORT

District 4 C1

Results as of: 5/31/2024

GMT:

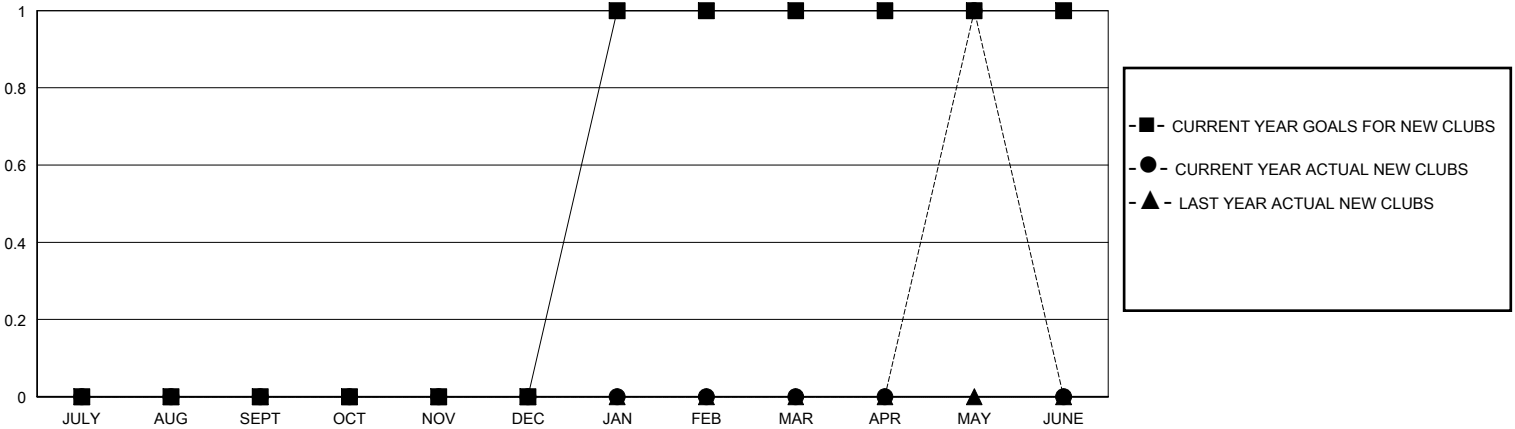
LOCATION CALIFORNIA

GMT CA

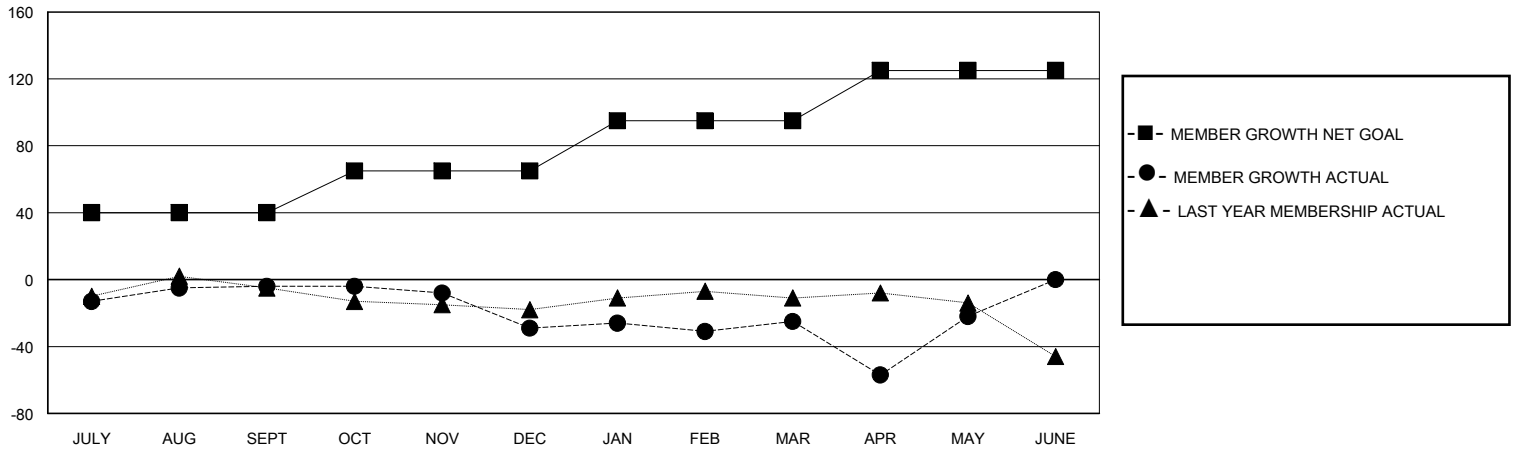
Clubs			
RESULTS FOR 2023-2024			
QUARTER	NEW CLUB GOAL	NEW CLUBS	DROPPED CLUBS
JULY/AUG/SEPT	0	0	0
OCT/NOV/DEC	0	0	1
JAN/FEB/MAR	1	0	0
APR/MAY/JUNE	0	1	0

Members			
RESULTS FOR 2023-2024			
QUARTER	MEMBER GROWTH NET GOAL	MEMBER GROWTH ACTUAL	DROPPED MEMBERS ACTUAL (including transfers)
JULY/AUG/SEPT	40	32	28
OCT/NOV/DEC	25	16	38
JAN/FEB/MAR	30	33	27
APR/MAY/JUNE	30	32	25

GOALS AND ACTUAL NEW CLUBS CUMULATIVE



GOALS AND ACTUAL MEMBERS CUMULATIVE



DROPPED CLUBS: 1	26 CLUBS OF 37 ADDED 1 OR MORE NEW MEMBERS	GENDER DISTRIBUTION MALE 531 (62.32%) FEMALE 321 (37.68%)
DROPPED MEMBERS DECEASED 9 CLUB CANCELLED 9 OTHER 117 TOTAL 135	CLICK HERE FOR CUMULATIVE MEMBERSHIP DATA	TOTAL FAMILY UNIT MEMBERS 155 FAMILY MEMBERS PAYING HALF DUES 80